



The Value of Air



## **AIR DISTRIBUTION PRODUCTS**

# ABOUT US

The Admore Airtech Private Limited is a young HVAC manufacturing company with a clear vision to be the best solutions provider for Air Distribution and Control Products. This process includes meeting to the client's expectations and perfectly curating the needed requirements as per their demand.

In 2020, we embarked on our manufacturing journey under the name "Admire Airtech." Since then, we have undergone a transformative process, redefining and improving various aspects of our air distribution and air control productions. Our aim has been to enhance the quality, efficiency, and effectiveness of these products to better meet the needs of our customers. Through continuous innovation and refinement, we have strived to deliver superior air distribution solutions that outperform the market standards.

## Our Vision

As a influential company providing engineering services to heating, cooling and ventilation sector, our vision is to dominate overseas and domestic markets with high quality and reliable products.

## Our Mission

Continue to our activities and maintain the existence of our company, our mission is to create a community of employees that are aware of their responsibilities, continuously developing their abilities in line with the company's development and reflecting this development into engineering, production and, quality.



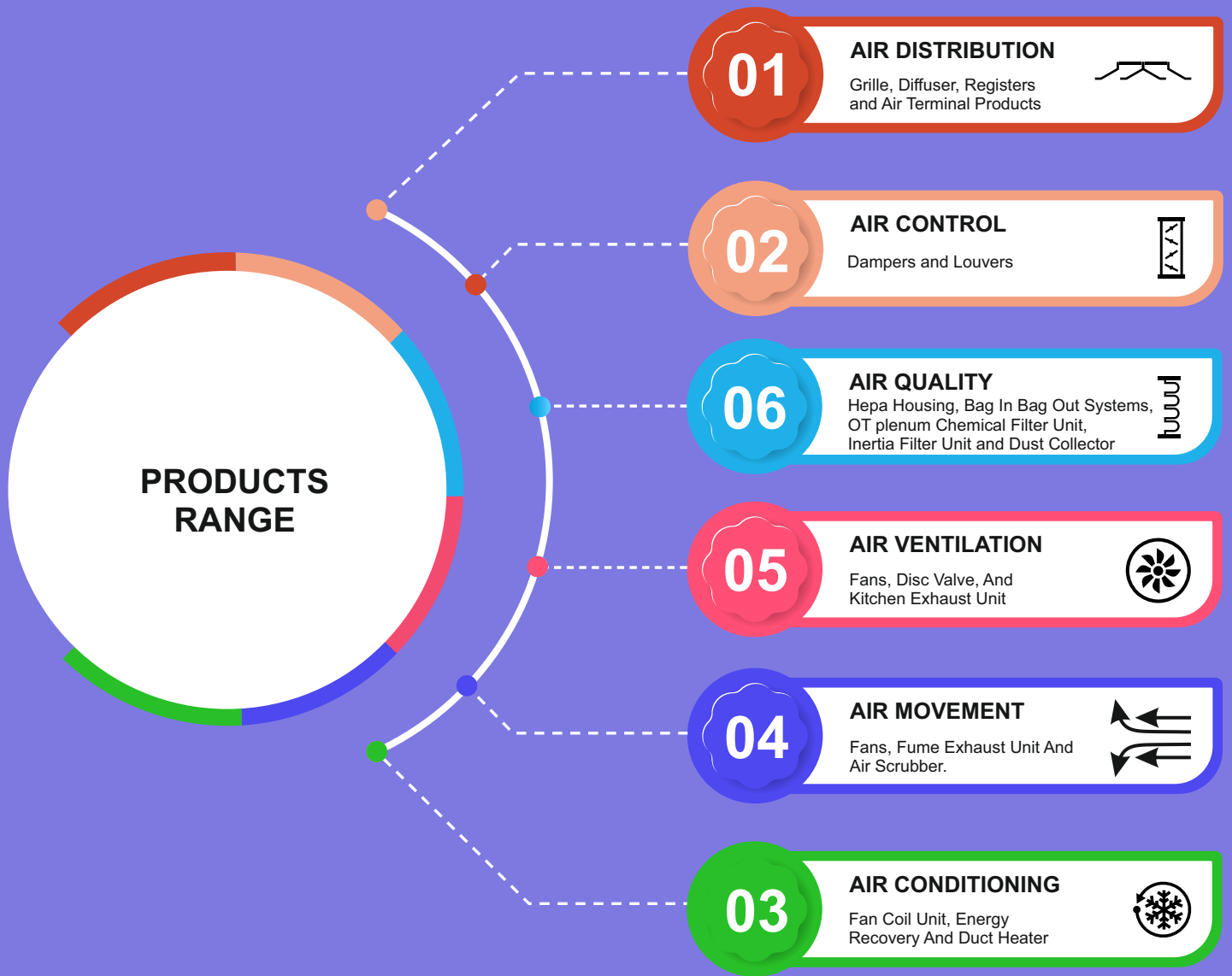
[info@admoreairtech.com](mailto:info@admoreairtech.com)



[www.admoreairtech.com](http://www.admoreairtech.com)



+91-9625216863,+91-8800836863



Note:- Air Control, Air Quality, Air Ventilation, Air Movement And Air Conditioning Section shall be other separate catalogue.



ISO 9001:2015

## ADMORE AIRTECH PVT.LTD.

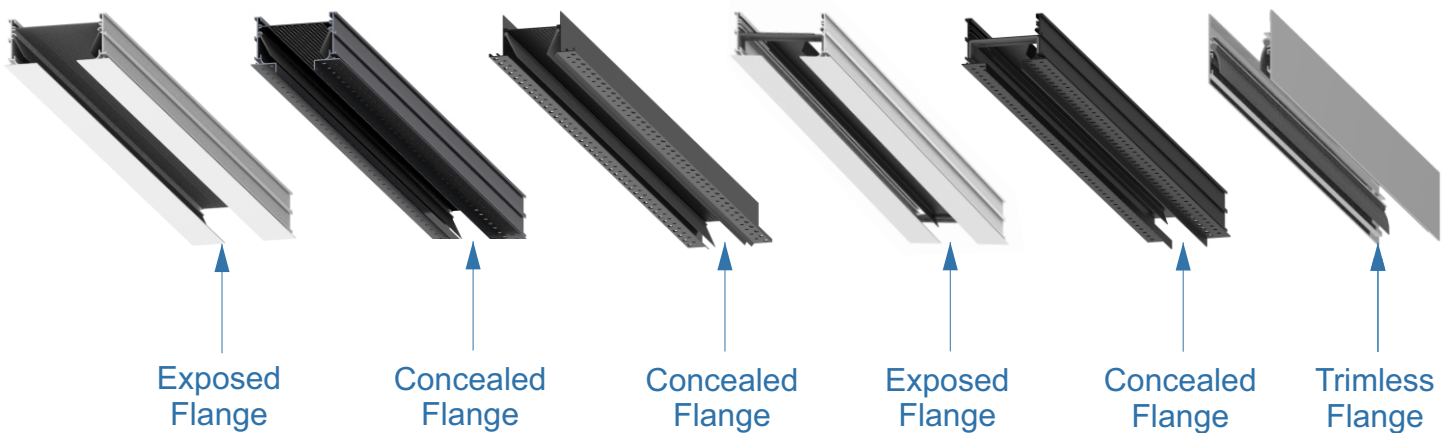
GROUND FLOOR, PLOT NO. D-186,  
SECTOR-10, NOIDA (U.P.) - 201301

E-mail : [info@admoraitech.com](mailto:info@admoraitech.com)



Air distribution products in HVAC (Heating, Ventilation, and Air Conditioning) refer to the components and devices that are used to distribute conditioned air throughout a building or space. These products ensure proper airflow, temperature control, and air quality within the occupied areas.

Below range of premium architectural air distribution flow bar slots that are commonly used in modern buildings. These flow bar slots are designed to provide efficient and effective air distribution while complementing the overall aesthetic of the space.



Admore Flow bar linear slot diffusers are high-quality air distribution products that are specifically designed to meet the requirements of demanding architectural and performance applications. These diffusers are manufactured using extruded aluminum, which provides a sleek and clean appearance in expose flange and in a concealed flange rough surface for better gypsum plaster adhesion on ceilings or walls, a rough surface is generally recommended. Creating a rough surface helps the plaster adhere more securely, reducing the chances of it cracking, peeling, or delaminating over time.

Flow bar linear slot diffusers are ideal for long and continuous installations where a continuous linear appearance is desired. They are commonly used for perimeter heating and cooling, where the diffusers are installed along the walls to distribute conditioned air evenly and efficiently. The diffusers facilitate the delivery of conditioned air to maintain desired temperatures along the building's perimeter.

Due to their premium construction and design, Flow bar linear slot diffusers offer enhanced performance and aesthetic appeal. They are often chosen for projects that require a high level of craftsmanship, architectural precision, and a seamless integration with the building's design.

In summary, Flow bar linear slot diffusers are top-of-the-line air distribution products made from extruded aluminum. They are specifically designed for demanding applications and are commonly used for long, continuous runs in perimeter heating and cooling systems. These diffusers provide an elegant and efficient solution for delivering conditioned air while maintaining a crisp and clean appearance.



## HIGH CAPACITY ARCHITECTURAL FLOW BAR LINEAR SLOT

The Admore High Capacity architectural flow bar linear slot diffusers are designed to give high performance and the visual appearance of an architectural shadow gap that has become a very desirable design feature within modern building.

High Capacity architectural flow bar linear slot diffusers are available in two basic air pattern configurations: Jet throw and High throw.

### 1. JET THROW

Jet throw Series continuous slot diffuser is designed for both ceiling and high sidewall applications and provides total air pattern control flexibility. The Jet throw Series features adjustable pattern controllers that direct the airstream perpendicular to the face.

#### A) Exposed flange

Drywall (ceiling, wall)  
used for hard ceiling applications and T-bar systems.

- Material-Extruded aluminum 6063-T6
- Finish-Powder coated
- Air Pattern-Adjustable Vanes

#### B) Concealed flange

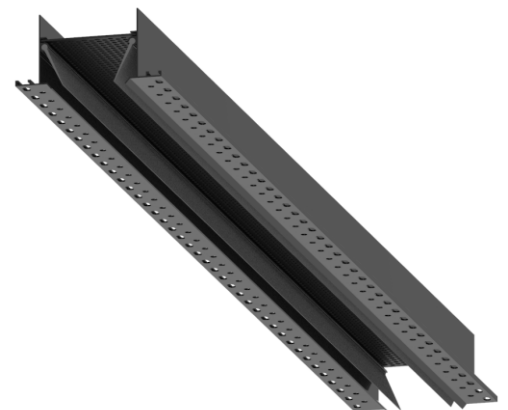
Drywall (ceiling, wall)  
used for hard ceiling applications when the flange are to be concealed

- Material-Extruded aluminum 6063-T6
- Finish-Powder coated
- Air Pattern-Adjustable Vanes

#### C) Concealed Angular flange

Drywall (ceiling, wall)  
used for hard ceiling application and drywall is cut at 45 degree angle to be flush with frame.

- Material-Extruded aluminum 6063-T6
- Finish-Powder coated
- Air Pattern-Adjustable Vanes





## 2. HIGH THROW

High throw Series continuous slot diffuser is designed primarily for ceiling applications. The adjustable pattern controllers, which are easily adjusted from the face, allow the discharge air to be directed to the left or right as well as downward.

### A) Exposed flange

Drywall (ceiling, wall)  
used for hard ceiling applications and T-bar systems.

- Material-Extruded aluminum 6063-T6
- Finish-Powder coated
- Air Pattern-Horizontal left or right



### B) Concealed flange

Drywall (ceiling, wall)  
used for hard ceiling applications when the flange are to be concealed

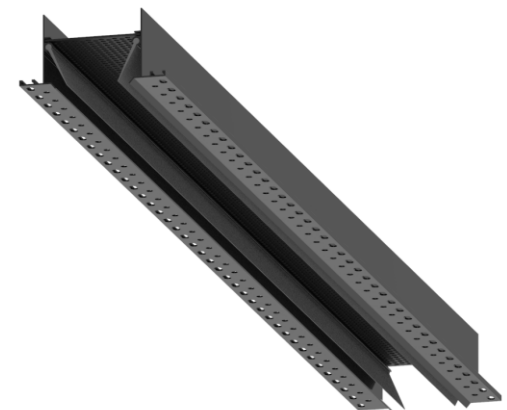
- Material-Extruded aluminum 6063-T6
- Finish-Powder coated
- Air Pattern-Horizontal left or right



### C) Concealed Angular flange

Drywall (ceiling, wall)  
used for hard ceiling application and drywall is cut at 45 degree angle to be flush with frame.

- Material-Extruded aluminum 6063-T6
- Finish-Powder coated
- Air Pattern-Horizontal left or right





### 3. NORMAL THROW

Normal throw Series continuous slot diffuser is designed primarily for ceiling applications. The adjustable pattern controllers, which are easily adjusted from the face, allow the discharge air to be directed to the left or right as well as downward.



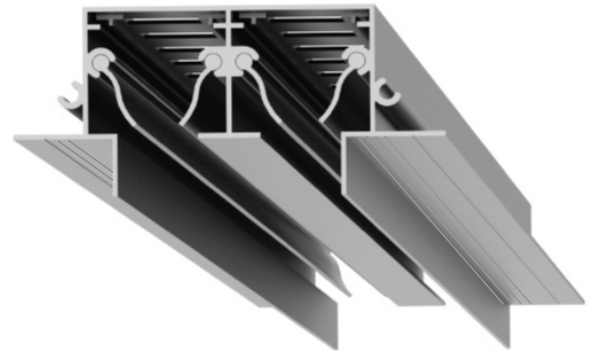
#### A) Exposed flange

Drywall (ceiling, wall)  
used for hard ceiling applications and T-bar systems.

- Material-Extruded aluminum 6063-T6
- Finish-Powder coated
- Air Pattern-Adjustable Vanes

#### B) Concealed flange

Drywall (ceiling, wall)  
used for hard ceiling applications when the flange are to be concealed



- Material-Extruded aluminum 6063-T6
- Finish-Powder coated
- Air Pattern-Adjustable Vanes

#### C) Flangeless

Drywall (ceiling, wall)  
used for hard ceiling application and drywall is cut at 45 degree angle to be flush with frame.

- Material-Extruded aluminum 6063-T6
- Finish-Powder coated
- Air Pattern-Adjustable Vanes





## CEILING DIFFUSER

A ceiling diffuser is a supply or return air diffuser designed for various ceiling mounting.

### A) Square flush type

In the flush type all rings or louvers projected to a plane surface with removable core.

Drywall (ceiling)

used for hard ceiling applications and T-bar systems.

- Material-Aluminum sheet
- Finish-Powder coated
- Air Flow-1,2,3, or 4 way supply
- Nominal Size-150, 225, 300, 375, 450 mm



### B) Square plaque type

The plaque diffuser is compatible with a wide variety of ceiling systems, and is designed to deliver architectural appeal without sacrificing performance.

Drywall (ceiling)

used for hard ceiling applications and T-bar systems.

- Material-Aluminum sheet
- Finish-Powder coated
- Air Flow-4 way supply
- Nominal Size-150, 225, 300, 375, 450 mm



### C) Square perforated type

These meet architectural demands for air outlets that blend into ceilings. Each has a perforated metal face with an open area of 10% to 50% that determines its capacity.

Drywall (ceiling)

used for hard ceiling applications and T-bar systems.

- Material-Aluminum sheet
- Finish-Powder coated
- Air Flow-Laminar
- Nominal Size-225, 300, 375, 450, 600 mm







## D) Circular flush type

Ideally suited to exposed duct applications, Circular Diffusers provide a strong horizontal pattern, even without a ceiling present. Drywall or duct (ceiling) used for hard ceiling applications and flexible duct open ceiling.

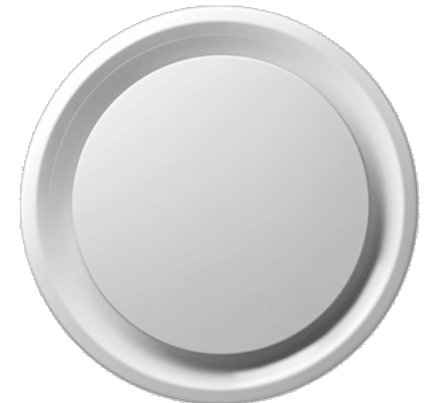
- Material-Aluminum sheet spinning
- Finish-Powder coated
- Air Flow-360° air flow diffusion.
- Nominal Size- Ø150 Ø200 Ø250 Ø300 Ø375 Ø400 Ø450



## E) Circular plaque type

Ideally suited to exposed duct applications, Circular Plaque Diffusers provide a strong horizontal pattern, even without a ceiling present. Drywall or duct (ceiling) used for hard ceiling applications and flexible duct open ceiling.

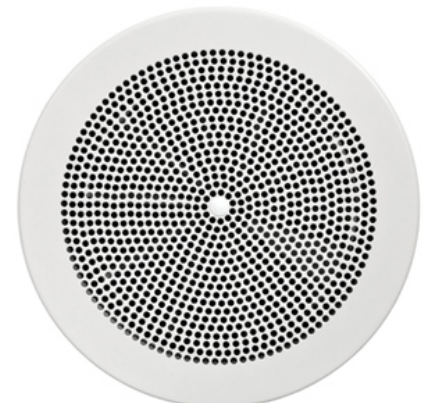
- Material-Aluminum sheet spinning
- Finish-Powder coated
- Air Flow-360° air flow diffusion.
- Nominal Size- Ø150 Ø200 Ø250 Ø300 Ø375 Ø400 Ø450



## F) Circular perforated type

These meet architectural demands for air outlets that blend into ceilings. Each has a perforated metal face with an open area of 10% to 50% that determines its capacity. Drywall or duct (ceiling) used for hard ceiling applications and flexible duct open ceiling.

- Material-Aluminum sheet
- Finish-Powder coated
- Air Flow-360° laminar air flow diffusion.
- Nominal Size- Ø150 Ø200 Ø250 Ø300 Ø375 Ø400 Ø450





## JET DIFFUSER

### A) Spot diffuser

Spot diffuser provides a modern alternative to traditional diffusers while providing superior performance characteristics.

Sidewall or exposed duct

Used convention centers, meeting halls, airports, shopping malls, and auditoriums.

- Material-Aluminum sheet spinning
- Finish-Powder coated
- Flow Adjustable- 360° Adjustable core
- Nominal Size- Ø75 Ø100 Ø200 Ø300 Ø400



### B) Eyeball diffuser

Eyeball type nozzle diffusers are highly suitable for providing a high stream of air over long distances.

Sidewall or exposed duct

Used convention centers, meeting halls, airports, shopping malls, and auditoriums.

- Material-Aluminum sheet spinning
- Finish-Powder coated
- Flow Adjustable- 360° Adjustable core
- Nominal Size- Ø160 Ø200 Ø275 Ø315 Ø400



### C) Jet nozzle diffuser

Jet nozzles are high capacity diffusers with jet-type airflow, well suited to large spaces and high ceiling applications that require long throws for full mixing, or spot cooling and heating conditions.

Sidewall or exposed duct

Used convention centers, meeting halls, airports, shopping malls, and auditoriums.

- Material-Aluminum sheet
- Finish-Powder coated
- Flow Adjustable- 60° Adjustable core
- Nominal Size- Ø250 Ø315 Ø380



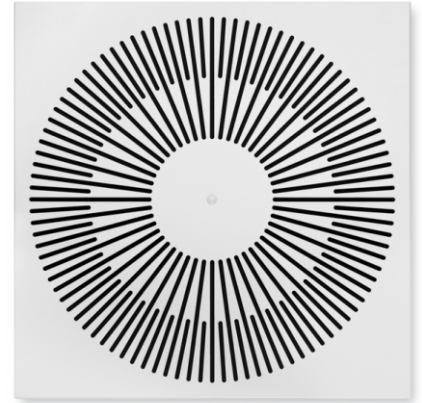


## SWIRL DIFFUSER

### A) Fixed rear vane type

Fixed rear vane type square ceiling swirl diffusers for high volume flow rates at low sound power levels and low differential pressure. Drywall (ceiling, wall) used for hard ceiling applications and T-bar systems.

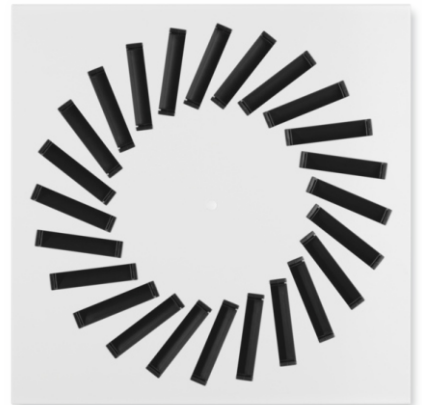
- Material-Galvanized steel/Alluminium sheet
- Finish-Powder coated
- Air Pattern - Fixed
- Nominal Size-600 mm



### B) Individual manual adjustable type

Individual manual adjustable vane square ceiling swirl diffusers for high room air change rates. Drywall (ceiling, wall) used for hard ceiling applications and T-bar systems.

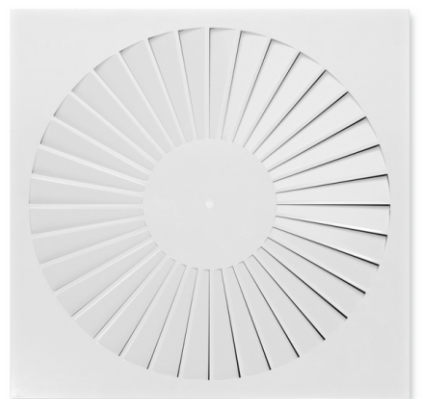
- Material-Galvanized steel sheet
- Finish-Powder coated
- Air Pattern- Adjustable
- Nominal Size- 300, 400, 500, 600 mm



### C) Fixed front vane type

Fixed front vane square ceiling swirl diffusers that create high induction levels, for high room air change rates. Drywall (ceiling, wall) used for hard ceiling applications and T-bar systems.

- Material-Galvanized steel sheet
- Finish-Powder coated
- Air Pattern - Fixed
- Nominal Size- 300, 400, 500, 600 mm





## HIGH CAPACITY ARCHITECTURAL DRUM JET DIFFUSER

### A) Single Blade Drum Jet Diffuser

The High Capacity Architectural Drum Jet Diffuser consist of extruded aluminum blades mounted inside a rotatable drum to produce long air throws with a high degree of directional control with single blade.

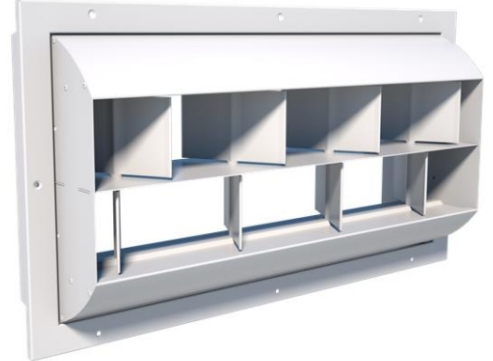
- Material-Extruded Alluminium
- Finish-Powder coated
- Air Pattern - Vertical Adjustable
- Nominal Size-As per requirement



### B) Split Blade

The High Capacity Architectural Drum Jet Diffuser consist of extruded aluminum blades mounted inside a rotatable drum to produce long air throws with a high degree of directional control with split blade.

- Material-Extruded Alluminium
- Finish-Powder coated
- Air Pattern - Vertical Adjustable
- Nominal Size-As per requirement



### C) Split Blade With Curve Frame

The High Capacity Architectural Drum Jet Diffuser consist of extruded aluminum blades mounted inside a rotatable drum to produce long air throws with a high degree of directional control with split blade and curve for suitable of round duct mount.

- Material-Extruded Alluminium
- Finish-Powder coated
- Air Pattern - Vertical Adjustable
- Nominal Size-As per requirement





## HIGH CAPACITY ARCHITECTURAL DISPLACEMENT DIFFUSER

### A) Bow-shaped displacement diffuser

The displacement diffuser is a bow-shaped displacement unit for wall installation. The body consists of a rear section with top and bottom plates and an air diffusion plate which is equipped with a number of adjustable discs. The top plate has either a circular or rectangular inlet depending on the size of the unit. The diffusion plate has an inspection cover for access to the duct system. There is a perforated front panel on the exterior of the body which is attached to the rear section with screws. These are concealed behind a removable aluminium profile. The measurement outlet is placed behind the removable aluminium profile.



### B) Circular-shaped displacement diffuser

The circular displacement diffuser is a complete, circular displacement unit for floor installation. The body consists of top and bottom plates and an air diffusion plate which is equipped with a number of adjustable nozzles. The top plate has a circular inlet. The diffusion plate has an inspection hatch for access to the duct system. There are two perforated panels on the exterior of the body, attached with screws. These are concealed behind a removable aluminium profile. The measurement outlet is placed behind one of the removable aluminium profiles.

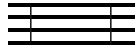


### C) Circular under floor diffuser

Circular supply air diffuser for installation in a floor where the diffuser face has guide-vane perforations arranged in a circular pattern for vortex air distribution.

The duct diffuser is made of galvanized sheet steel. The air diffuser is supplied with a connection frame fitted with a spigot connection.



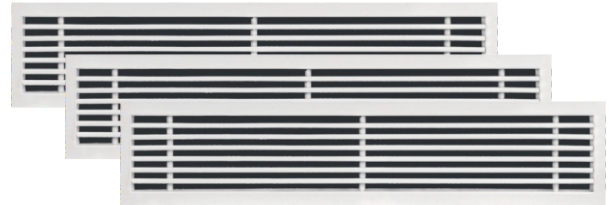


## AIR GRILLE

### A) Fixed bar linear grille

This type is similar to the adjustable single-deflection grille, except that the vanes are not adjustable. The vanes may be straight or set an angle. The angle at which the air is discharged from this grille depends on the type of deflection vanes. Drywall (ceiling, wall) used for hard ceiling applications and duct systems.

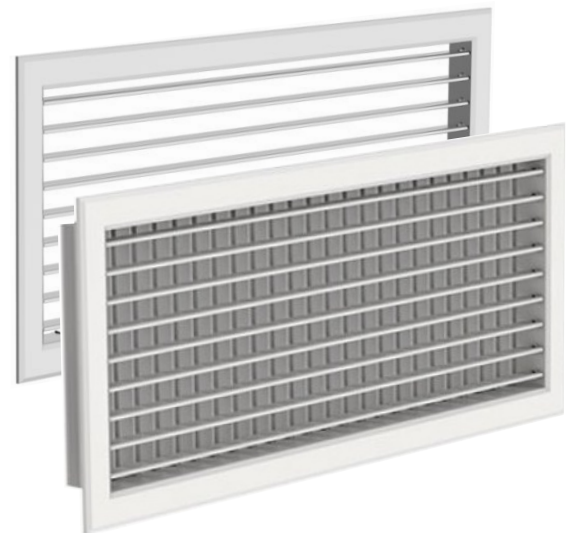
- Material-Extruded aluminum 6063-T6
- Finish-Powder coated
- Air Pattern - 00,15 & 30 deg
- Nominal Size- 1800 maximum



### B) Adjustable Grille

This type of grille is a double or single louver individual adjustable grilles are suitable for duct, ceiling and sidewall applications in most commercial projects. The grille vanes are individually adjustable to allow jet spread or deflection

- Material-Extruded aluminum 6063-T6
- Finish-Powder coated
- Air Pattern - Adjustable
- Nominal Size- 600 maximum

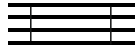


### C) Floor Heavy Grille

Floor grille has been specifically designed for sill and floor applications where light foot traffic will be experienced. In addition, this model is available with any of the Airline cores which then makes the product ideal for sidewall applications where reinforced recessed frames are necessary. The model is constructed from aluminium alloy extrusions with tube type cores and fully welded frames. The core is supported by rear reinforcing bars

- Material-Extruded aluminum 6063-T6
- Finish-Powder coated
- Air Pattern- Fixed type 00 deg
- Nominal Size-1800 Maximum



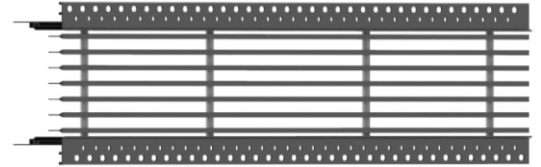


## HIGH CAPACITY ARCHITECTURAL LINEAR GRILLE

### A) Fixed bar linear concealed grille

This type High Capacity architectural linear grilles have been designed to satisfy air diffusion and engineering requirements while providing a narrow plaster-in border to meet architectural specifications. High Capacity grilles may be used in modular or continuous situations for sidewall, cill or bulkhead applications. The range is available with a wide variety of special options and fabrications to suit most project requirements. used for hard ceiling applications and duct systems.

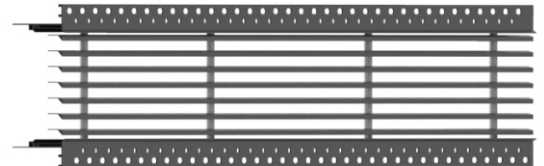
- Material-Extruded aluminum 6063-T6
- Finish-Powder coated
- Air Pattern - 00 deg
- Nominal Size- 1800 maximum



### B) Fixed bar linear concealed grille

This type High Capacity architectural linear grilles have been designed to satisfy air diffusion and engineering requirements while providing a narrow plaster-in border to meet architectural specifications. High Capacity grilles may be used in modular or continuous situations for sidewall, cill or bulkhead applications. The range is available with a wide variety of special options and fabrications to suit most project requirements. used for hard ceiling applications and duct systems.

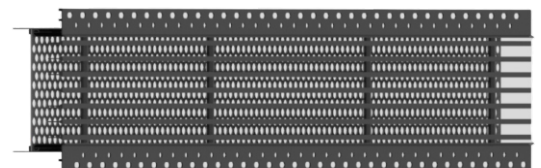
- Material-Extruded aluminum 6063-T6
- Finish-Powder coated
- Air Pattern - 15 deg
- Nominal Size- 1800 maximum

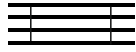


### C) Fixed bar linear concealed grille with laminar air diffusion

This type High Capacity architectural linear grilles have been designed to satisfy air diffusion and engineering requirements while providing a narrow plaster-in border to meet architectural specifications. High Capacity grilles may be used in modular or continuous situations for sidewall, cill or bulkhead applications. The range is available with a wide variety of special options and fabrications to suit most project requirements. used for hard ceiling applications and duct systems.

- Material-Extruded aluminum 6063-T6
- Finish-Powder coated
- Air Pattern - 00 deg
- Nominal Size- 1800 maximum





## D) Fixed bar linear exposed grille

This type High Capacity architectural linear grilles have been designed to satisfy air diffusion and engineering requirements while providing a narrow plaster-in border to meet architectural specifications. High Capacity grilles may be used in modular or continuous situations for sidewall, cill or bulkhead applications. The range is available with a wide variety of special options and fabrications to suit most project requirements. used for hard ceiling applications and duct systems.

- Material-Extruded aluminum 6063-T6
- Finish-Powder coated
- Air Pattern - 00 deg
- Nominal Size- 1800 maximum

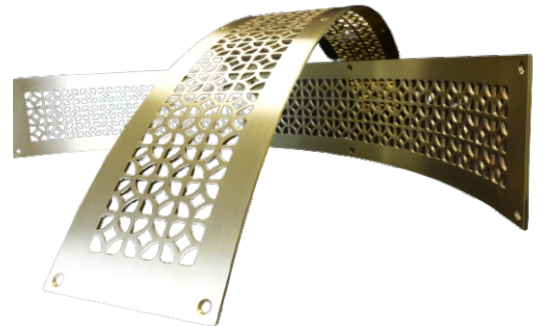


## E) Custom Grille

Architectural custom grilles offer limitless design possibilities. They are designed to be highly customizable to suit the specific requirements and aesthetics of a building. One aspect of this customization is the ability to match the pattern of the grille with the surrounding site wall or ceiling.

Drywall (ceiling, wall)  
used for hard ceiling and wall applications.

- Material-Galvanized/Aluminium
- Finish-Powder coated
- Air Pattern- Fixed type 00 deg
- Nominal Size-1800 Maximum



## F) Perforated architectural grille

This grille is stamped from a single sheet of metal to form openings through which air can pass.

Drywall (ceiling, wall)  
used for hard ceiling applications and duct systems.

- Material-Galvanized steel or aluminum sheet
- Finish-Powder coated
- Air Pattern - Fixed
- Nominal Size- 300, 400, 500, 600 mm







## ACCESSORIES

### A) Aluminum Collar Damper

This type is similar to the adjustable single-deflection grille, except that the vanes are not adjustable. The vanes may be straight or set an angle. The angle at which the air is discharged from this grille depends on the type of deflection vanes. Drywall (ceiling, wall) used for hard ceiling applications and duct systems.

- Material-Extruded aluminum 6063-T6
- Finish-Powder coated
- Air Pattern - 00 and 15 deg
- Nominal Size-600 maximum



### B) Mild Steel Collar Damper

These can be attached to the backs of grilles as separate units in the duct. adjacent blades of this damper rotate in opposite directions and many receive air from any direction made out Mild steel sheet.

- Material-Galvanized steel sheet
- Finish-Black Painted
- Air Pattern- constant air volume
- Nominal Size-600 Maximum



### C) Radial Blade damper

Radial blade damper provides airflow adjustment at the diffuser or plenum neck. Volume control blades move simultaneously in opposite directions.

- Material-Galvanized steel sheet
- Finish-Powder coated
- Air Pattern - Fixed
- Nominal Size- 300, 400, 500, 600 mm



## SOME OF THE LEADING INDUSTRY CONTRACTORS WE WORK WITH

Hemcool Engineers  
Marc Surface Coating Pvt Ltd  
Smartcool Systems Pvt Ltd  
Kelvin Systems Pvt Ltd  
Mistral Airconditioning  
Luft Care Services  
Vighneshwar Airconditioning Pvt Ltd  
Ridhi Sidhi Engineers  
Zenith Marketing Services  
Aditya Engineers  
Hi-Tech Air Systems  
MB Aircon  
Krishna Refrigeration  
Happy Aircon & Health Care Engg.  
Contec Services  
Roots Cooling Systems Pvt. Ltd.  
Harcomp Airflex Pvt Ltd.  
Climatisation HVAC Engineerers LLP  
Quick Solutions  
Contec Services  
Koolmart  
Air Explorer  
Contec Services  
System Airconditioning Pvt Ltd  
Koolmart  
Zephyrs Cooling Solution  
Sidra Aircon  
SK System Pvt Ltd.  
Sanvik Engineers India Pvt. Ltd.  
AS Engineers  
Cool Care Centre  
Coastal Climate Engineers Pvt Ltd  
Sterling And Wilson Pvt. Ltd.  
Indian Analytical Laboratories  
Hygine Airtech  
Smartcool Systems Pvt Ltd  
Tool Tech SPM  
CE Comfort Engineers Pvt Ltd.  
Cool Control  
Vihaan Enterprises

Adhunik Cooling Systems Pvt. Ltd.  
Adhunik Vatanukool Pvt. Ltd.  
Anemo Prime Pvt.Ltd.  
Aquachill Systems India Pvt. Ltd.  
Avant Garde Cleanroom & Engg. Solution Pvt. Ltd  
Blue Star Ltd.  
Dyna Aircon Pvt. Ltd.  
Fairair Engineers Pvt. Ltd.  
Flaktgroup India Pvt. Ltd.  
Frick India Ltd.  
GMP Technical Solutions Pvt Ltd  
Hilltop Refrigeration  
HTL Aircon Pvt. Ltd.  
Apex Projects India Pvt.Ltd.  
Stag Tech  
Koolcraft  
KPS Electro  
Syntec Airflow System  
Delta Engineers & Technical Services  
Aditya HVAC Solutions Pvt.Ltd.  
Anemo Projects Pvt.Ltd.

## SOME OF OUR PROMINENT INSTALLATIONS

Hemcool Farmhouse  
Anest Iwata Motherson Pvt Ltd  
Sanar Hospital  
Kapil Sibal Villa-B  
Hemkunt Chambers  
Medgenome Labs  
DLF Cybercity  
Sivalik Hospital  
Omaxe Royal Residency  
BBMP Head office  
Marris Tower  
Milli Times Lane  
DDA Sheds  
Rangoli Resorts Pvt Ltd  
Ahujasons Shawlwale Pvt Ltd  
Medgenome Labs  
Accenture Solutions Pvt Ltd  
Indian Analytical Laboratories  
Stepan Lifesciences Pvt Ltd  
NY Cinema, Kanpur  
KHB Cryo Air  
RFB LATEX  
IREDA, East Kidwai Nagar  
IREDA, East Kidwai Nagar  
Agni Limited,Urbtech  
Paras Iconic Tower  
Scott- Edil Pharmacia Ltd  
IREDA, East Kidwai Nagar  
Rangoli Resorts Pvt Ltd  
Tasva AD Mall Gorakhpur  
The Signature Banquets & Party Lawn  
TASVA AD Mall Gorakhpur  
Fairdeal Agencies  
Sparrow Intercity Pvt Ltd  
Max Hospital

DLF Camellias  
Welcom Infra  
Wordmark Whiteland  
SSB Ambience Mall  
American Embassy  
Genes2me Pvt.Ltd.  
Parida Associates  
Sudha Surgical  
Jamie Oliver Kitchen  
Passport Seva Kendra  
Cultfit Hybrid  
J.K. Enterprises  
Prabha Eye Hospital  
NTPC  
Dominos  
Jubilaint Food  
Bharti Airtel Limited  
Bharti Airtel Limited

REGISTERED OFFICE  
ADDRESS

C-516, THIRD FLOOR, DDA JANTA FLAT,  
POCKET-11, JASOLA, NEW DELHI,  
SOUTH DELHI, INDIA, 110025

[info@admoreairtech.com](mailto:info@admoreairtech.com)

[www.admoreairtech.com](http://www.admoreairtech.com)



+91-9625216863

+91-8800836863